

कार्यकारी प्रति
WORKING COPY

SPECIFICATION NO. IND/TC/4674(b)

48

Supersedes Specn No. IND/TC/4674(a)

Re Sealed bids.
Dc No. 8543-Tc.
dt - 9.11.2012

GOVERNMENT OF INDIA
MINISTRY OF DEFENCE
DGOA ORGANISATION

FR/S/SB

SPECIFICATION
FOR

PONCHO GLACIER

CAT No. - 8415-002557

ISSUED BY

CONTROLLER
CONTROLLERATE OF QUALITY ASSURANCE
TEXTILES AND CLOTHING
POST BOX NO. 294
KANPUR 208 001

PRICE: Rs.

YEAR: 2012

RECORD OF AMENDMENTS

कार्यकारी प्रति
WORKING COPY

AMENDMENT Sl. No.	DATE	DETAILS OF AMENDMENTS	AMENDMENT CARRIED OUT BY & DATE
			<p>As per S/84 S/88</p> <p>And 1 to 3</p>

CONTENTS LIST

<u>Sl.No.</u>	<u>CONTENTS</u>	<u>PAGE No.</u>
0.	FOREWORD ✓	1
1.	SCOPE ✓	2
2.	RELATED SPECIFICATIONS/REFERENCES ✓	2-3
3.	STANDARD PATTERN ✓	3
4.	MATERIALS ✓	4
5.	MANUFACTURE/PROCESSING ✓	5-6
6.	DIMENSIONS & TOLERANCES ✓	7
7.	WORKMANSHIP AND FINISH ✓	7
8.	MARKING ✓	7
9.	PRE-INSPECTION BY MANUFACTURER ✓	7
10.	QUALITY ASSURANCE ✓	7
11.	SAMPLING PROCEDURE ✓	8
12.	CRITERIA FOR CONFORMITY ✓	9
13.	TEST METHOD ✓	9
14.	PACKAGING ✓	9-10
15.	TECHNICAL LITERATURE/DOCUMENT ✓	10
16.	ADVANCE SAMPLE ✓	10
17.	WARRANTY CLAUSE ✓	11
18.	DEFENCE STORES CATALOGUE NUMBER ✓	11
19.	DRAWING/SKETCHES ✓	11
20.	SUGGESTION FOR IMPROVEMENT ✓	12

0.0 **FOREWORD**

0.1 This specification has been prepared by Controller, Controllerate of Quality Assurance (Textiles and Clothing), Post Box No. 294, Kanpur on behalf of the Director General of Quality Assurance, Ministry of Defence, New Delhi.

0.2 This specification supersedes Specification No.IND/TC/4674(a).

0.3 This specification shall be used for tender enquiry procurement, manufacture and Q A of the item covered by this specification.

0.4 The Quality Assurance Authority for the store covered by this specification is the Controller, Controllerate of Quality Assurance (Textile & Clothing), P. B. No. 294, Kanpur-208001. Enquiries regarding this specification related to technical particulars shall be referred to the QA authority mentioned in the tender or contract.

0.5 Copies of any other reference document such as specification/Drawing/Instructions/guides can be obtained from AHSP or from respective agencies.

0.6 This document should not be communicated to any one who is not authorised to receive it.

0.7 Any deviation from this specification will not be resorted to without the express written sanction of the Inspection Authority viz. The Controller, Controllerate of Quality Assurance (Textile & Clothing), P. B. No. 294, Kanpur-208001 or his authorised representative.

0.8 The store must conform in all respects with this specification and other particulars issued with it.

1.0 SCOPE

1.1 This specification covers the requirements of Poncho Glacier against defence requirements and provides guidance to contractors/suppliers, manufacturers, QA agencies and indenters etc. The Poncho Glacier is intended to be used by army personnel providing complete protection in snow bound areas and even from torrential rains for multipurpose uses in all region and terrain. It is designed to serve as Cape with hood, Bivouac and Ground Sheet and provided with pack on the back. It is usable in universal size.

2.0 RELATED SPECIFICATIONS/REFERENCES

2.1 Reference is made in this Specification to:-

S.NO.	SPECIFICATION NO.	MATERIALS
✓ 1.	JSS: 8305-32-2003	Fabric Nylon, Polyurethane Coated, 105 GSM Snow White
2.	Schedule No. DMSRDE/Tex-3/94/5(a)	Tape Nylon Thin 13mm White
✓ 3.	IS : 8156-1994 (Second Revision) reaffirmed 2004	Fastener Hook & Loop Tape Synthetic
4.	IS : 4741-1968 (Reaffirmed 2003, Amds 1)	Snap Fasteners (four pieces) Spring Type 7/7
5.	IS: 4084-1978 (Reaffirmed 2001, First Rev, Amds 2)	Specification for Eyelets and Washers(Sail)
6.	IS: 5041-1978 (1st Rev, Reaffirmed 2001, Amds 2)	Specification for Stationary Eyelets.
7.	IS: 4229:1992(Reaffirmed 2008, Second Rev, Amds 1)	Sewing Thread Nylon
8.	JSS: 4020-8-1981	Cord Nylon Braided
✓ 9.	DMSRDE Schedule No. DMSRDE/02/1/Tex-3	Thread for Over Locking (duil & Bright)

S.NO.	SPECIFICATION NO.	MATERIALS
10.	IS: 1912-84 (V.No.2) (Reaffirmed 2007, Amds 1)	Jute Twine 3 Ply
11.	IS: 12734- 2002 (1 st Revision, Amds 1) Reaffirmed 2007	Textile Polypropylene Twine
12.	CQA(GS)/US/460	Boxes fibre board rigid corrugated Triple wall 7 Ply
13.	CQA(GS)/US/434(a)	Self Sealing Polythene Bag
14.	JSS: 8040-8-1974	Tape Adhesive Transparent water Proof 50 mm
15.	JSS: 8135 -10-2004	Polypropylene Strapping
16.	IS:2771	Boxes fibre board rigid corrugated triple wall 5 ply
17.	IS:11652:2000(Second Revision, reaffirmed 2006)	HDPE Bags

2.2 Copies of IS specifications can be obtained on payment from Bureau of Indian Standards, 9 Bahadur Shah Jafar Marg, New Delhi or their regional offices.

2.3 Copies of CQA (GS) and CQA (T&C) specifications i.e. IND/GS & IND/TC series can be obtained on payment from Controllerate of Quality Assurance (GS), Post Box No.127 and Controllerate of Quality Assurance (T&C), Post Box No. 294 Kanpur respectively.

2.4 Copies of DMSRDE Specifications may be obtained from The Director, DMSRDE, G.T.Road, Kanpur on payment.

2.5 Copies of JSS specifications may be obtained from The Director, Directorate of Standardisation, Ministry Of Defence, Standardisation Documentation Center, Room No. 13, J Block, DHQ PO, New Delhi on payment.

3.0 STANDARD PATTERN

3.1 The standard pattern of Poncho Glacier held in the custody of the Controller CQA (T&C), Kanpur shall constitute the standard as regards any particulars/properties not noted/defined in this specification.

4.0 MATERIAL

4.1 The Poncho Glacier shall be manufactured from the materials as per details given below.

COMPONENTS	MATERIALS	PARTICULARS
Body	Fabric Nylon, Polyurethane Coated, 105 GSM Snow white	JSS: 8305-32-2003
Tying Tape ↓	Tape Nylon Thin 13mm white	Schedule No. DMSRDE/Tex-3/94/5(a)
Pouch	Fastener Hook & Loop Tape Synthetic 19 mm white	IS : 8156-1994 (Second Revision)-reaffirmed 2004
Snap Fastener	Snap Fastener (Four Pieces) Spring Type 7/7 with plastic washer.	IS:4741-1965 (Amdt-1, Reaffirmed 2003) except for pull strength, which should be 4Kgf (min)
Eyelet Aluminium	Eyelets Aluminium Alloy chemically passivated with washer, No.21	IS:4084 with Supplementary Schedule No.CQA(GS)/SS/335
Eyelet on Hood	Eyelet Steel 6 mm dia.	IS: 5041-1978 (1 st Rev. Reaffirmed 2001, Amds 2)
Sewing Thread	Sewing thread Nylon White (35 N, BS)	IS:4229:1992(2 nd Revision, Amds:) reaffirmed 2008
Tying Cord	Cord Nylon Braided 2452 N White	JSS: 4020-8-1981
Over locking & Interlocking thread	Thread for Over Locking & Interlocking (dull & Bright)	As per Appendix 'B'
Plastic washer	Using in Snap Fastener with Plastic washer. Thickness (Under pressure 200g/cm ²): 1.14mm & Dia. - 12.52 mm	Best Trade quality

5.0 MANUFACTURE / PROCESSING

5.1 The Poncho Glacier shall be manufactured to the shape and design as illustrated in the drawings attached to this specification. The Poncho Glacier shall be manufactured as described in the succeeding Para.

5.2 The Polyurethane Coated surface of the fabric shall be kept inward while stitching the Poncho. The Poncho shall be in two pieces of rectangular shape, these two rectangular pieces of fabric nylon 105g shall be joined together longitudinally by two rows of machine stitching 7mm apart leaving a portion about the center for attachment of pouch and hood, as shown in the drawing plate attached.

5.3 HOOD

5.3.1 Hood shall be in one piece consisting of two vertical darts at about the crown position. The crown shall be cut from front to the back of head level and then joined together by two rows of machine stitching, catching both the darts in between and over locking the raw edges to attain the required shape, as shown in the drawing plate attached.

5.3.2 The round face periphery including neck flap portion shall be provided with a reinforcement piece of self material and joined from inside to the hood. Joining shall be made first at the periphery, turning in the raw edges and then finished throughout the periphery with second row of machine stitching 5 mm apart. One steel eyelet 6mm dia shall be fixed on both sides of the hood, near the chin portion on the external layer only at the positions shown in the plate attached. Loose edge of the internal reinforcement piece shall then be stitched, to the outer layer, turning in the raw edge, by single row of machine stitching to form a wide tunnel for insertion of cord nylon, as shown in the plate attached.

5.3.3 One set of snap fastener shall be fixed in the hood at the crown position as shown in drawing for adjustment. A triangular double layer piece of body material shall be provided in the female part of the snap fastener from inside as shown in the plates attached.

5.3.4 A 32cm long opening shall be left in the continuity of the joining seam of the two rectangular pieces of the Poncho. The opening will start at a distance of 68cm from one end of Poncho. The opening shall be finished with attachment of 3cm wide false hem as shown in the plate attached.

Lower end of the opening shall be tacked by two rows of machine stitching 1 cm apart. Two sets of snap fastener shall be fixed in the opening for closure at the positions shown in the plate attached.

5.4 POUCH

5.4.1 A rectangular portion shall be cut from the main body of the Poncho transversely, about the center of the width and 86cm away from the other end of Poncho. A rectangular piece of self material in single layer shall be attached to the opening of the cut portion throughout by two rows of machines stitching to form a cuboidal pouch measuring 60cm x 35cm x 20cm, as shown in the plate attached. The raw edges of pouch shall be overlapped.

5.4.2 Velcro hook and loop tape fastener 19mm wide and 58cm long, shall be attached at the opening of the pouch from inside, across the length of the Poncho at the positions and in the manner illustrated in the plate attached.

5.5 Tying Tape Tape Nylon 240cm long shall be stitched to the Poncho transversely from inside 50cm away from the bottom edge of Poncho (towards the pouch side) by 50cm long machine stitching, as shown in the plate attached. The tape shall be located at the position, as illustrated in the plate attached.

5.6 Hem The body of the Poncho shall be turned-in throughout perimeter along length and width and finished with single row of machine stitching to form a 3cm wide hem, as shown in the plate attached.

5.7 Eyelets Eight eyelets with washer shall be fixed, one each at the corners and at the center along length and width, on the hem of Poncho, as shown in the plate attached.

5.8 Snap Fastener Eight sets of snap fastener, four on each side along the length of the Poncho, shall be fixed on the hem, in the manner and at the positions, as illustrated in the plate attached. The female part of snap fastener will be fixed with a plastic washer at its outer side to avoid looseness.

5.9 General Stitching The Poncho Glacier shall be assembled throughout with lock-stitch regulated at 35 to 40 stitches per decimeter with even tension. The ends of the threads shall be securely fastened off and loose threads shall be trimmed off.

5.10 Inter-locking Raw/frayed edges at joining seams of Poncho, such as side and hood seams shall be finished with interlock stitches by matching/white sewing thread as per Appendix 'B' of this Specification.

6.0 DIMENSIONS & TOLERANCES.

6.1 The Poncho Glacier shall conform to the dimensions as given in the drawing plate attached & Appendix 'A' to this specification.

7.0 WORKMANSHIP AND FINISH

7.1 In appearance, shade, general workmanship & finish and in all other respects not noted / defined in this specification, Poncho Glacier shall conform to the sealed pattern held in the custody of Controller CQA (T&C) Kanpur.

8.0 MARKING

8.1 A size label of cloth taffeta synthetic white of 105mm x 50mm size legibly and indelibly marked with manufacturer's name, initial or recognized trade mark, nomenclature, DS Cat No. & year of manufacture of the store shall be securely stitched on the hem seam near the left corner at front of the Poncho Glacier.

9.0 PRE-INSPECTION BY MANUFACTURER

9.1 Manufacturers/Contractors must satisfy themselves first by carrying out thorough pre-inspection of each lot/batch that the stores manufactured are in accordance with the contract and fully conform to the specification, before tendering to QA officer nominated under the terms of contract.

9.2 A declaration by the Contractor that necessary pre-inspection/tests have been carried out on the stores tendered and the same are fit for inspection and test shall be rendered along with the challan. The declaration shall include the method followed in pre-inspection showing. Features checked/tested and the test reports be submitted along with challan.

9.3 If the Quality Assurance officer finds that pre-inspection of the consignment as required above has not been properly carried out, the consignment is liable for rejection.

10.0 QUALITY ASSURANCE

10.1 On examination of samples taken randomly as per sampling plan given at clause 11 shall show that the store should fully conforms to the requirement laid down in this specification.

11.0 SAMPLING PROCEDURE

11.1 The maximum size of the lot is restricted to 10,000 Nos only.

11.2 The supplier shall offer the store serially numbered and arranged in such a manner that the entire lot is easily accessible to the sampling officer.

11.3 Based on the lot size offered for Quality Assurance, sample units for visual examination and dimensional check at the time of sampling be drawn as per column (2) & Bulk Inspection as per column (4) of the table given below using technique of random sampling as per IS: 4905.

11.4 On having been satisfied with the preliminary examination, samples if required for laboratory test /examination shall be drawn as per column (5) & (7) of the table given below:

TABLE FOR SCALE OF SAMPLING AND PERMISSIBLE NUMBER
BASED ON 4% AOL ISO: 2859-1989

Lots Size in Nos./ pairs	Sampling Plan for						
	Visual Examination/ dimensional check at the time of sampling		Sample Size for Details Check at Bulk QA stage	Physical Parameters (For laboratory tests)		Chemical Parameters (For laboratory tests)	
	Sample Size	Accept ance No.		Sample Size	Accept ance No.	Sample Size	Accept ance No.
1	2	3	4	5	6	7	8
Upto 280	13	1	32	13	1	3	0
281-500	20	2	50	13	1	5	0
501-1200	32	3	80	20	2	5	0
1201-3200	50	5	125	20	2	13	1
3201-10000	80	7	200	32	3	13	1

- Note:-** i) Sampling shall be done randomly as per IS: 4905.
ii) Sample for lab testing will be drawn from the samples drawn and mentioned in column (2) only

12.0 CRITERIA FOR CONFORMITY

12.1 All the sample units drawn shall be tested/examined to the specification requirements. If all the sample units are found to conform to the requirements of this specification the lot shall be considered to be in conformity to the specification.

13.0 TEST METHOD

13.1 The basic cloth and garniture used shall conform to the specification requirements when tested as per method laid down in the relevant specification.

14.0 PACKAGING

14.1 **Materials.** The following materials shall be used for packaging of Poncho.

S.No.	Materials	Specification
(i)	Boxes fibre board rigid or corrugated Triple wall 7 Ply	CQA(GS)/US/460
(ii)	Polythene Bag Self Sealing	CQA(GS)/US/434(a)
(iii)	Tape Adhesive Transparent water proof 50 mm	JSS: 8040-8-1974
(iv)	Polypropylene Strapping 0.5 mm thick & 15 mm wide	JSS: 8135-10-2004
(v)	Jute Twine 3 Ply. Or Textile Polypropylene twine	IS: 1912-84 (second revision) Amdt No. 1 Reaffirmed 2007 Or IS : 12734 :2002(1 st Revision, Amdt-1), Reaffirmed 2007
(vi)	Boxes fibre board rigid or corrugated Triple wall 4 ply	IS:2771
(vii)	HDPE Bags	IS:11552:2000(2 nd Revision, reaffirmed 2006)

14.2 METHOD

14.2.1 The store shall be delivered/packed in new dry and clean condition. Each Poncho Glacier shall be suitably folded and put inside the envelope of size 290x240 mm made of self material provided with a flap of 130 mm and hook and loop closing arrangement.

14.2.2 Five such enveloped Poncho shall be made into unit pack (bundle) by suitably placing one over the other and then suitably tying them with three ply jute twine or textile Polypropylene twine at two places maintaining the

distance between two strings and edges not more than 25cm. Each unit pack shall then be put in a self sealing polyethylene bag of suitable size.

14.2.3 Suitable numbers of such unit packs shall be placed properly in Box of size 420x330x375mm. Two such inner boxes shall be kept in outer box fibre board rigid corrugated triple wall seven ply of size 700mm X 450mm X 450 mm to the specification No. CQA (GS)/US/460. The empty space if any left out in the box shall be filled with suitable cushioning material (not effecting the preservation of the store) to make the package compact. The gross weight of the package shall not be exceeding 40 kg. All joints of the box shall be properly closed with tape adhesive transparent 50 mm. The outer box will be covered with HDPE bag of size 750x500x1000mm. Mouth of the HDPE shall be securely stitched. The package shall be bound with two bands of polypropylene strapping at two places. Each polypropylene strapping shall be one complete piece and the ends shall be sealed with machine.

14.3 MARKING OF PACKAGE

14.3.1 Before dispatch, each Box/package shall be legibly marked by stencil showing the following details:-

- i) Nomenclature and cat part No. of stores.
- ii) Quantity packed in the bale.
- iii) Month and year of packing.
- iv) Name or trade mark of manufacturer.
- v) Gross Mass of bale in kg.
- vi) Inspection Note No. and date.
- vii) AT / S.O. No. and date.
- viii) Name and address of the consignee
- ix) Lot No. and date

15.0 TECHNICAL LITERATURE AND DOCUMENTS

15.1 Refer clause 2 of this Specification

16.0 ADVANCE SAMPLES

16.1 Manufacturers who have not supplied this store during the last three years have to submit advance samples manufactured from specified materials for inspection, testing, and trial/clearance by AHSP prior to commencement of bulk production. Number of samples required for material, dimensional check, and test/proof shall be three or as laid down in the contract.

17.0 WARRANTY CLAUSE

17.1 Except as otherwise provided in the invitation to the tender, the Contractor/seller hereby declare that the goods, stores, articles sold/supplied to the purchaser under this contract shall be of the best quality and workmanship and new in all respects and shall be strictly in accordance with the specifications and particulars contained/mentioned in the contract.

17.2 The Contractor/seller hereby guarantees that the said goods/stores/articles would continue to conform to the description and quality aforesaid for a period of 12 months from the date of delivery of the said goods/stores/articles to the purchaser or 15 months from the date of shipment/dispatch from the contractor's work, whichever is earlier and that notwithstanding the fact that the purchaser (Inspector) may have inspected and/or approved the said goods/stores, articles, if during the aforesaid period of 12/15 months the said goods/stores/articles, be discovered not to be conform to the description and quality aforesaid or not having satisfactory performance or have deteriorated and the decision of the purchaser in that behalf shall be final and binding on the Contractor/seller to rectify replace by acceptable goods/stores/articles or such portion or portions thereof as is found to be defective by the purchaser within a reasonable period not exceeding 3 months or as may be allowed by the purchaser in his discretions on the application made thereof by the Contractor/seller and in such an event the above mentioned warranty period shall supply to goods/stores/articles rectified/replaced from the date of rectification/replacement thereof, otherwise the Contractor/seller shall pay to the purchaser such compensation as determined by the purchaser as may arise by reason of the break of the Warranty herein contained".

18.0 DEFENCE STORE CATALOGUE No.

18.1 The store covered by this specification shall bear the following DS Cat. No.

<u>Store</u>	<u>DS Cat Part No.</u>
Poncho Glacier	8415-002557

19.0 DRAWINGS/SKETCHES:-

19.1 Two drawing plate attached to this specification.

20.0 SUGGESTIONS FOR IMPROVEMENT

20.1 This specification is a live document and subject to change/up-dating.
Any suggestions for improvement of this document may be sent to: -

CONTROLLER
CONTROLLERATE OF QUALITY ASSURANCE
TEXTILES AND CLOTHING
POST BOX No. 294
KANPUR 208 001
Tel. 0512-2324529
Fax 0512-2324529
E-mail- cqate@dataone.in

DATE:

CONTROLLER
CONTRAOLLERATE OF QUALITY ASSURANCE
TEXTILES AND CLOTHING
POST BOX No. 294,
KANPUR 208 001

APPENDIX 'B'SCHEDULE OF PARTICULARS FOR OVERLOCK & INTERLOCK THREAD

S.NO.	PARAMETERS	INTERLOCK (BRIGHT)	OVERLOCK (DULL)
1.	No. of plies	Nil	2
2.	Liner Density 'TEX'	48 (Single)	22±2 (Resultant)
3.	Length/unit mass 'm/kg'	21,000±5%	45,740±5%
4.	Breaking Strength 'gf' (20cm between grip)	600±5%	780±5%
5.	Elongation at break % (approx.)	20±4%	10±5%
6.	Direction of twist	S	S/Z
7.	Nature of material	Viscose Rayon / Polynosic (Medium Tenacity, min 3gpd)	Polyester (Medium Tenacity, min 4gpd)
8.	pH of aqueous extract	6 - 8.5	6 - 8.5

PONCHO GLACIER

SHEET 1 OF 2

SPECIFICATION NO. : -IND/TC/4674(b)

SIZE: - UNIVERSIAL (All dimensions in cms)

Width of Poncho	Height Of Poncho	Front opening		Pouch			Length of shoulder of Poncho (one side)	Distance from center of pouch to other end	Total length (from top to neck joining seam)	Hood				Tying tap		Total length
		Distance from bottom of front opening to bottom of poncho	From lower back to neck	Length	Width	Height				Width of base of re-inforcement piece	Width of middle reinforcement piece	Width of hood (below 19cm from the top)	Distance from tying tape to bottom of poncho	Distance from tying tape to bottom of poncho		
105 ± 1.5	110 ± 1.5	68 ± 0.75	32 ± 0.5	60 ± 0.75	35 ± 0.5	20 ± 0.25	71.5 ± 1.5	86 ± 0.75	39 ± 1.5	19.5 ± 0.25	6 ± 0.25	31.0 ± 1.5	50 ± 0.5	50 ± 0.5	240	

NOTE:-A general tolerance in dimensions, as per details given below may be permitted :-

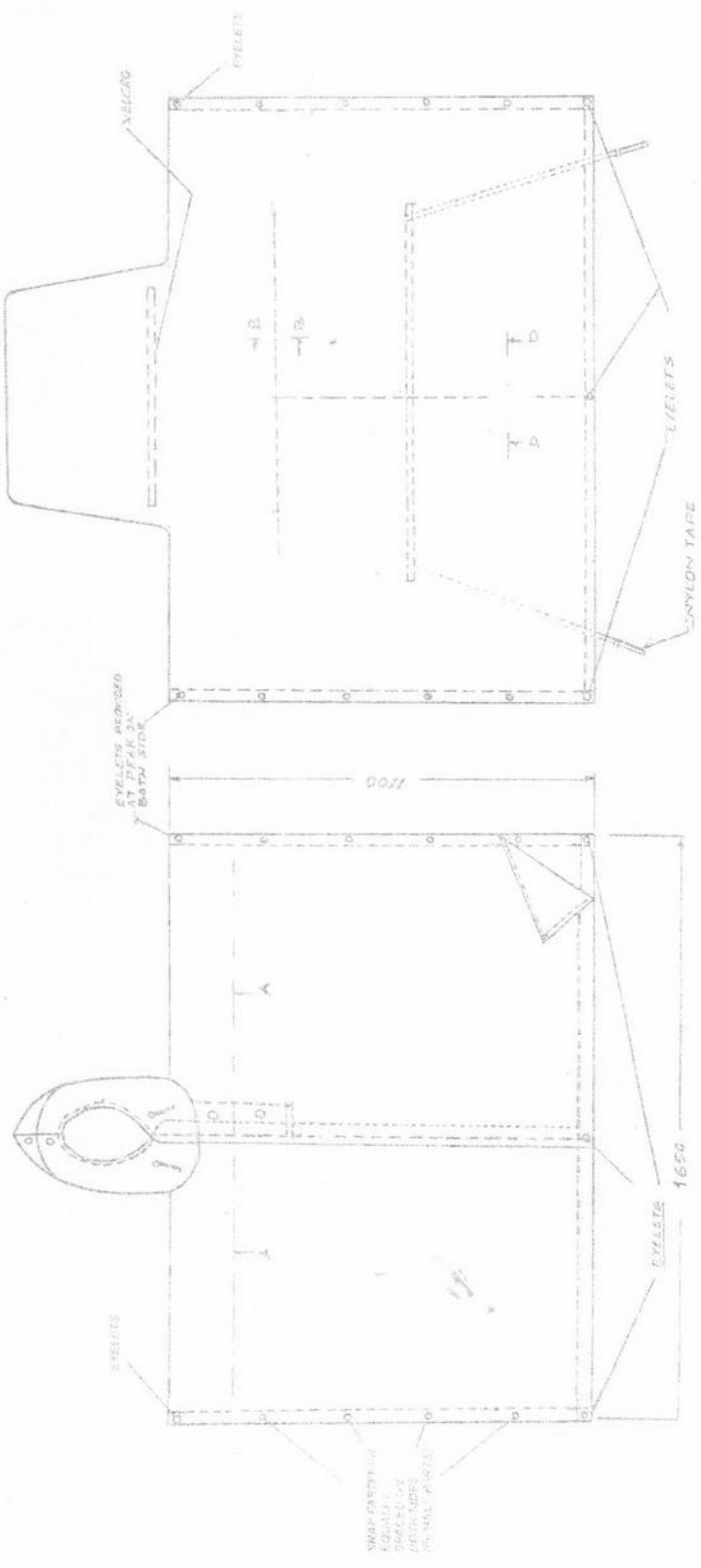
- (a) Dimensions up to 25 cm : ± 0.25 cm
- (b) Dimensions from 26 cm up to 50 cm : ± 0.50 cm
- (c) Dimensions from 51 cm up to 100 cm : ± 0.75 cm
- (d) Dimensions 101 cm and above : ± 1.5 cm

SHEET 1 OF 2

PONCHO GLACIER

FRONT VIEW

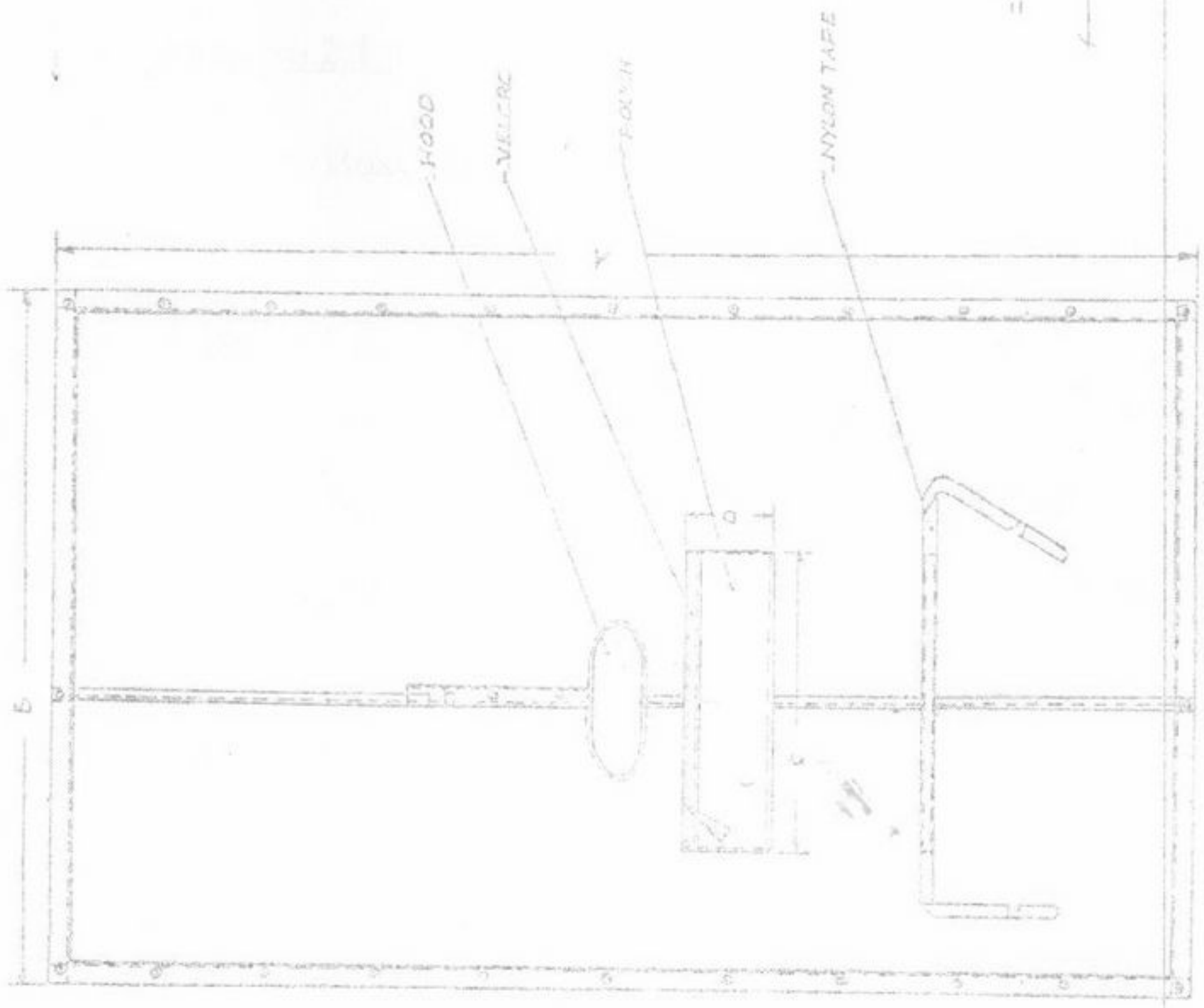
BACK VIEW



SHEET 2 OF 2

PONCHO GLACIER

HOOD
(PRESSED POSITION)



VIEW IN DEVELOPED POSITION (INNER SIDE)

SECTION EE



TRIMMABLE STAIN-RESISTANT
PVC DOTTLE LAYER 0.1mm

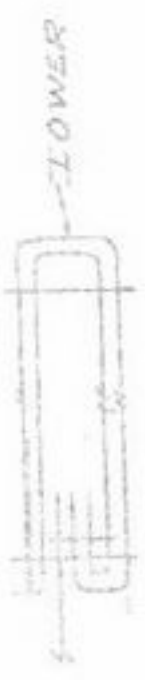
SECTION CC



SECTION AA



FRONT LAYER
(UPPER)



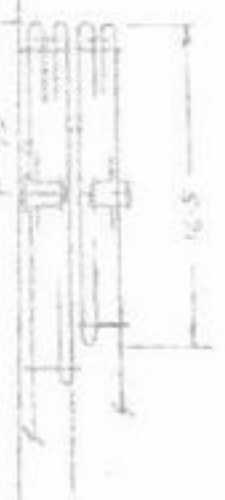
SECTION BB



SECTION DD



SECTION FF



INTERNAL
TC-15

NO. G/3558/TC-15

03 Dec 2013

अनुभाग अधिकारी

टी सी -3

3/12/13

REVISION OF SPECIFICATION : PONCHO GLACIER

1. Reference: Specification No. IND/TC/4674(b) for Poncho Glacier.
2. The following amendments in the subject specification have been approved by the Controller on Minute Sheet No. 16 of case No. S/3558/TC-15 Pt 2 & the same may be carried out in the subject specification.

(a) **Against Clause No.2.1 at Srl 16 under column 'Material'**

For -Boxes Fibre Board Rigid Corrugated triple wall 5 ply

Read - Boxes Fibre Board Corrugated Double Wall 5 ply

(b) **Against Clause No.14.1 at Srl (vi) under column 'Material'**

For -Boxes Fibre Board Rigid Corrugated triple wall 5 ply

Read - Boxes Fibre Board Corrugated Double Wall 5 ply

3. The case No.S/3558/TC-15 Pt 2 is enclosed herewith for perusal and further necessary action.
4. Please return the case to TC-15 when done with.

Encls :

Case No.S/3558/TC-15 Pt 2

Ar K Mishra

(आर के मिश्रा)

सहायक अभियंता (गु० आ०)

अनुभाग अधिकारी टी सी -15

3/12/2013

Jc Bishra
03/12/13

**AMENDMENT NO.3 TO SPECIFICATION NO. IND/TC/4674(b) OF
PONCHO GLACIER**

1. Page No.2
Under Clause No.2.1
At Srl No. (3)
Under Column Specification No.


For - IS: 8156-1994 (Second Revision) Reaffirmed 2004
Read - IS: 8156-2014

2. Page No.4
Under Clause No.4.1
Under Pouch Component
Under Column Particulars

For - IS: 8156-1994 (Second Revision) Reaffirmed 2004
Read - IS: 8156-2014

3. All other contents shall remain unchanged.
4. This Amendment No.3 shall be kept with the Specification No. IND/TC/4674(b).

DATE: 06 JUL 2018


CONTROLLER
CONTROLLERATE OF QUALITY ASSURANCE
TEXTILES AND CLOTHING
ASHOK PATH
KANPUR 208 004